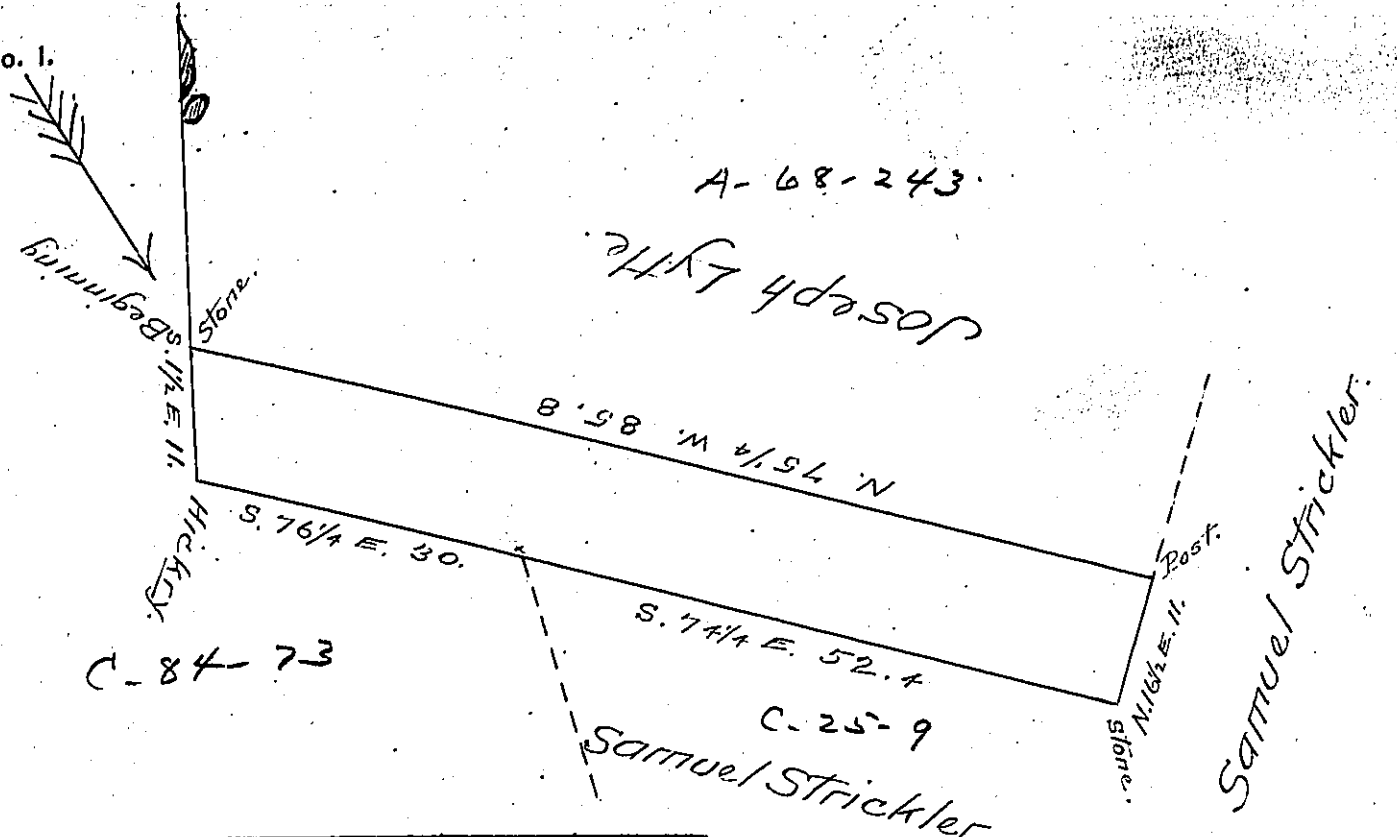


FORM No. 1.



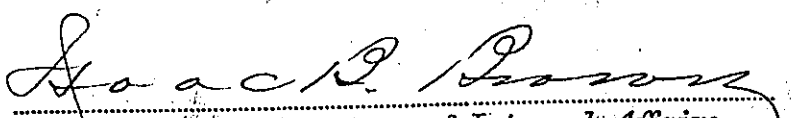
	N.	S.	E.	W.	M. D.	N. & S. Aries.
S. 11/2 E. 11.		11.00	00.28		00.28 " .56	3.0800.
S. 76 1/4 E. 30		7.14	29.14		29.70 58.84	2.12.0580.
S. 74 1/4 E. 52.4		14.22	50.43		109.27 159.70	1553.8194.
N. 16 1/2 E. 11.	10.53		3.12		162.82 165.94	1714.4946.
N. 75 1/4 W. 85.8	21.83			82.97	82.97 00.00	1811.2351.
	<u>3236</u>	<u>3236</u>	<u>82.97</u>	<u>82.97</u>		

1714.4946.
 1811.2351.
 3525.7297.
 1768.9574.
 2) 1756.7723.
 160) 878.3861
 800) 543.78.75
 78

A Draught of a Tract, piece, or part of land situated in Rapho Township, Lancaster County containing five acres and seventy eight perches ~~strict~~ ~~allowance~~ ~~MEASURE~~ of land, survey'd the 19th day of May A. D. 1842 at the instance of Joseph Lytle, by Warrent dated the 3^d day of May 1842.

To Jacob Sollada. Jacob Redseeker D.S.
N. E. D. Lancaster County

IN TESTIMONY that the above is a copy of the original remaining on file in the Department of Internal Affairs of Pennsylvania, made conformably to an Act of Assembly approved the 16th day of February, 1833, I have hereunto set my Hand and caused the Seal of said Department to be affixed at Harrisburg, this Twenty ninth day of September 1905


 Secretary of Internal Affairs.